

Spruce forest Horské smčiny

1. How to say it in English?
Jak se řekne anglicky?

1 red deer

2 capercaillie

3 eurasian lynx

4 three-toed woodpecker

5 red wood ant

6 bluberry

7 norway spruce

8 hard-fern



žebrovice různolistá

datlík tříprstý

rys ostrovid

mravenec lesní

jelen evropský

smrk ztepilý

tetřev hlušec

brusnice borůvka

2. How many animals can you find?
Kolik objevíš živočichů?

C	A	P	E	R	C	A	I	L	L	I	E
L	.	L	U	.	O	O	O	K	C	U	C
L	.	W	R	.	.	B	.	.	J	.	.
I	.	O	A	E	.	.	I	A	.	E	N
B	.	L	S	.	D	.	Y	N	.	L	I
S	.	A	I	.	.	D	.	.	.	T	T
S	T	R	E	E	C	R	E	E	P	E	R
O	.	U	N	E	.	E	A
R	.	.	L	.	F	O	X	.	R	B	M
C	.	.	Y	.	.	P	.	.	.	K	E
D	.	.	N	.	S	R	N
E	.	.	X	A	A	I
R	E	D	W	O	O	D	A	N	T	B	P

3. Do you know the 3 most important tree species from spruce forest?
V horské smrčině rostou především 3 druhy stromů. Znáš jejich jména?



norway spruce



downy birch



smrk ztepilý

jeřáb ptačí

europaean mountain ash

bříza pýřitá

4. Bird Rebus
Ptačí rébus

PECKER OUZEL CREEPER
RED RING TOED THREE WOOD
CROSS GOLD TREE CREST BILL

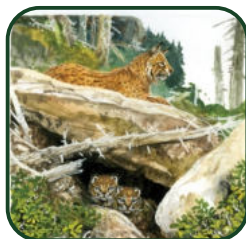


We are learning the verbs with „lynx”. Match the verbs with the pictures to identify what the Lynx is doing. 2 verbs are for one picture.
Učíme se s rysem. Přiřaď k obrázkům slovesa podle činností rysa. 2 slovesa patří k jednomu obrázku.

- jump ● play ● go ● watch ● hunt ● mark ● cuddle ● sniff ● dig ● have a rest ● hide





















Add suitable verbs to these sentences.
A nyní doplň vhodná slovesa do vět.

The Lynx likes to from elevated spots. .

The lynx can 7 - 10 metres, it can 2,5 metres from the spot.

The lynx roe deer.

The lynx..... with her mum. The lynxits territory

The lynx a hole to its prey.



Translate these sentences.
Přelož tyto věty.

The head is **rounded**.

The hairs on the cheeks form **whiskers**.



Lynx has up to 4 cm long, **dark tufts** of proloned hairs at the end of its earlobes.

As with all hunters, the lynx's **eyes** are directed forward so it can track its **prey**.